

Health and Social Care

Year 13: Unit 13

Assessment Opportunities	Literacy/Reading opportunities	CEIAG Links
<p>Unit 13 is an internally assessed unit of 60 GLH.</p> <p>Students are assessed in learning objectives, where content is taught and then assessment time is allocated to completing their assessed task.</p> <p>Whole class feedback is provided at least once every half term, and individual feedback is provided at the end of each learning objective. This is recorded on the CTEC mark sheet for the specified unit.</p> <p>Student work is then externally assessed in one of two external moderations.</p>	<p>This unit is about sexual health, reproduction and early development stages and therefore students develop their knowledge of a wide range of tier three vocabulary. Factual texts are used within this unit, providing opportunities for reciprocal reading.</p> <p>Case studies and news articles are used particularly in learning objective one when evaluating the effectiveness of legislation in protecting the individual against unlawful and harmful intercourse.</p> <p>Curriculum vision:</p>	<p>Students explore a range of careers in relation to sexual health, from midwifery, Health Visitors, and EYFS practitioners.</p> <p>Students explore their role in taking care of the mother and the child throughout the child's first year of life.</p>

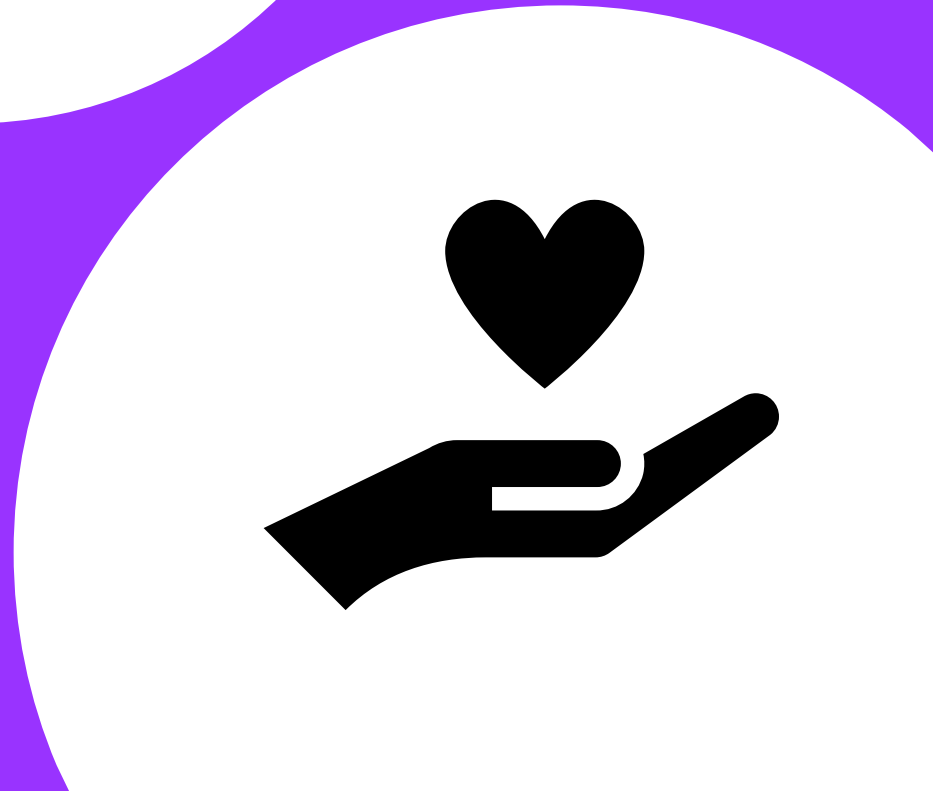
“Our aim is to deliver a curriculum that is inclusive, relevant and progressive for all learners.”

OCR Cambridge
Technical
Level 3

Health and Social Care

Delivered over two years
Certificate & Extended certificate

UNIT 13



Year 2 - Course overview

Unit 4 – Anatomy and Physiology for Health and Social care

This unit will aim to teach you about the structure and function of some of the tissues, organs and bodily systems that enable a healthy bodily processes to take place in a coordinated way. We will explore the cardiovascular system, respiratory, digestive systems as well as the roles of vital organs including the pancreas, liver and kidney. We will also explore the different malfunctions of these systems and the care needs and treatments that are available.

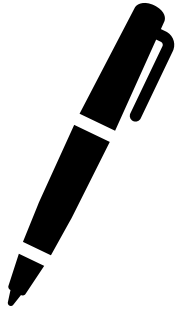
Unit 13 – Sexual health, reproduction and early development stages

This unit will provide us with an overview of the factors that influence health and wellbeing through an understanding of reproduction and preconception, antenatal and postnatal care. We will learn about sexual health and the types of contraception that are available as well as prenatal health and factors that could influence the foetus. We will also explore the health and development of the foetus, stages of pregnancy and an overview of care and development of the baby in the first year of life.

Unit 9 – Supporting individuals with learning disabilities

This unit you will understand the term 'learning disability', and will look at a range of different types and possible causes. You will examine how the lives of individuals with a learning disability are changing as attitudes and approaches to support evolve. Current best practice in providing support for people with learning disabilities includes issues such as where people live, how life opportunities are promoted, and how the individual can be supported to lead a full and active life. The unit will explore these areas with the emphasis being on taking a person-centred approach that focuses on the individual's strengths, preferences and hopes, and on ways of enabling the individual to achieve their goals and ambitions.

Course information & methods of assessment



- The certificate comprises of three units. Two externally assessed and one internally assessed.
- The extended certificate builds upon this and in the second year of studies students will have one externally assessed unit with a slightly larger weighting and two internally assessed units.
- Deadlines will be set for students to work towards completing.
- Students will have a resit attempt of the externally assessed units.



Careers in Health and Social Care

Jobs that are directly linked to studying Health and Social care

There are thousands of jobs that are available within the Health and Social care sector.

Many of these are within the NHS and there are some health care roles that are private.

Throughout the duration of studying health and social care, we consider multiple careers opportunities and job roles. These include:

- Doctors
- Nurses
- Midwives
- Secondary care providers – Cardiologists, Rheumatoidologists, dermatologists and more
- Phlebotomists
- Social care workers
- Care assistants
- HCA's
- Neonatal midwives
- Dieticians
- Art therapists
- Dentists

Due to the vocational nature of Health and Social care, careers are talked about frequently with career insights discussed with students on a regular basis!

Unit 13 - Sexual health, reproduction and early development stages		Content to be covered	Assessment
Week 1-2	Learning outcome 3: To be able to know the factors that could affect the health of the foetus and the success of birth	Conditions in utero: Spina bifida Down syndrome Foetal alcohol syndrome	
Week 3-4		Factors that may impact the health of a foetus including: Alcohol, genetic conditions, smoking, the use of drugs, diet of the mother and birth injury	
Week 5-6		Internal assessment for LO3 (P5 and P6)	Individual feedback for LO3 For deadline please see assessment plan

Unit 13 – Sexual health, reproduction and early development stages		Content to be covered	Assessment
Week 7-8	Learning outcome 1: To be able to understand sexual health and contraception	Sexually transmitted infections and impacts to health and wellbeing Ways that individuals are protected from unlawful and unsafe sex Methods of contraception Approaches to promote good sexual health	
Week 9-10		Legislation and how it protects the individual from harmful sexual intercourse: Sexual offence Act 2003, Statutory definition of consent, Legal age of consent and Sex and relationship education at school	

Unit 13 – Sexual health, reproduction and early development stages		Content to be covered	Assessment
Week 11-12	Learning outcome 1: To be able to understand sexual health and contraception	Completion of P1, P2, P3, M1 and D1	Individual feedback for LO1 For deadline please see assessment plan
Week 13-14	Learning outcome 2: To be able to understand the importance of prenatal health and the process of conception	The process of conception in humans – Ovulation, intercourse and fertilisation as well as in vitro fertilisation (IVF) Factors that can affect conception Completion of P4 and M2	Individual feedback for LO2 For deadline please see assessment plan
Week 15-16	Learning outcome 4: To be able to understand the stages of pregnancy and birth and the postnatal care of the mother	Gestation of the foetus – Trimesters Stages of the birth process – Stage 1, 2 and 3 Pain relief during labour Methods of delivery and complications	

Unit 13 – Sexual health, reproduction and early development stages		Content to be covered	Assessment
Week 17-18	Learning outcome 4: To be able to understand the stages of pregnancy and birth and the postnatal care of the mother	Postnatal care of the mother: Statutory support, informal support and other organisations. Completion of P7, P8, P9 and M3	Individual feedback for LO4 For deadline please see assessment plan
Week 19-20		Completion of P7, P8, P9 and M3	Individual feedback for LO4 For deadline please see assessment plan
Week 21-22		Final unit corrections and improvements for standards verification	